



## SS1 & SS5 – Vista 1 & 2

Sunday 6<sup>th</sup> October: Distance 2.76 km  
First Car Due: 10:03 and 11:47

### Description

SS1 & SS5 Vista Hill starts at the junction of Lower North East Road and Range Road South with a steep windy downhill road to get you in the mood for the rest of the day.

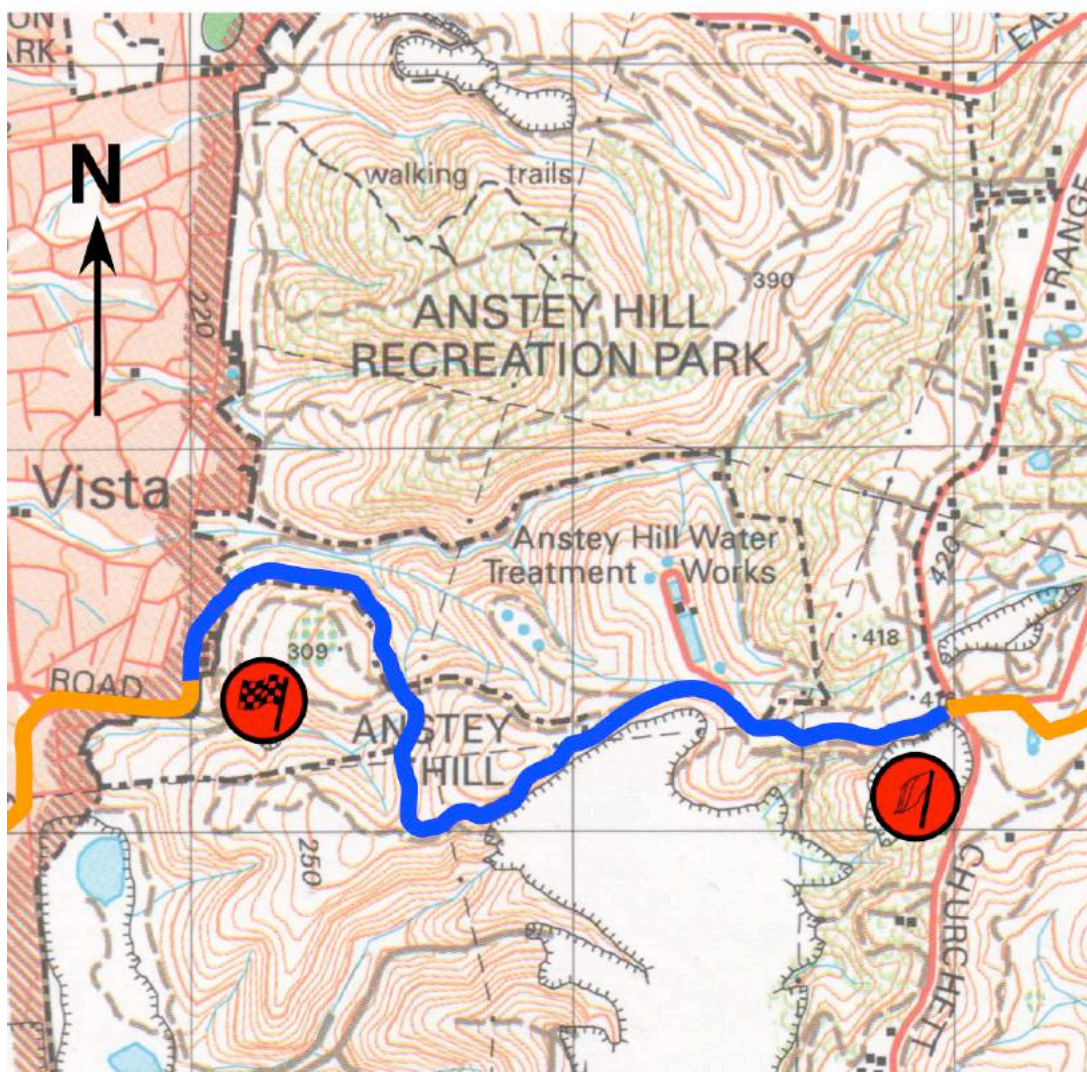
Vista 1 is untimed and is there to get you ready for the timed stages. There is one RSP at 0.90 km.

There is a **double caution** at 1.46 km where the road goes hard right.

### GPS Points

Stage Start		34° 50.449' S 138° 44.811' E	
RSP1	from	34° 50.440' S 138° 44.249' E	to 34° 50.496' S 138° 44.138' E
Flying Finish		34° 50.342' S 138° 43.514' E	

### Stage Map



Grid squares represent 1 kilometre squares



## SS2 & SS6 – Pinkerton Gully 1 & 2

**Sunday 6<sup>th</sup> October: Distance 3.54 km**  
**First Car Due: 10:47 and 12:31**

### Description

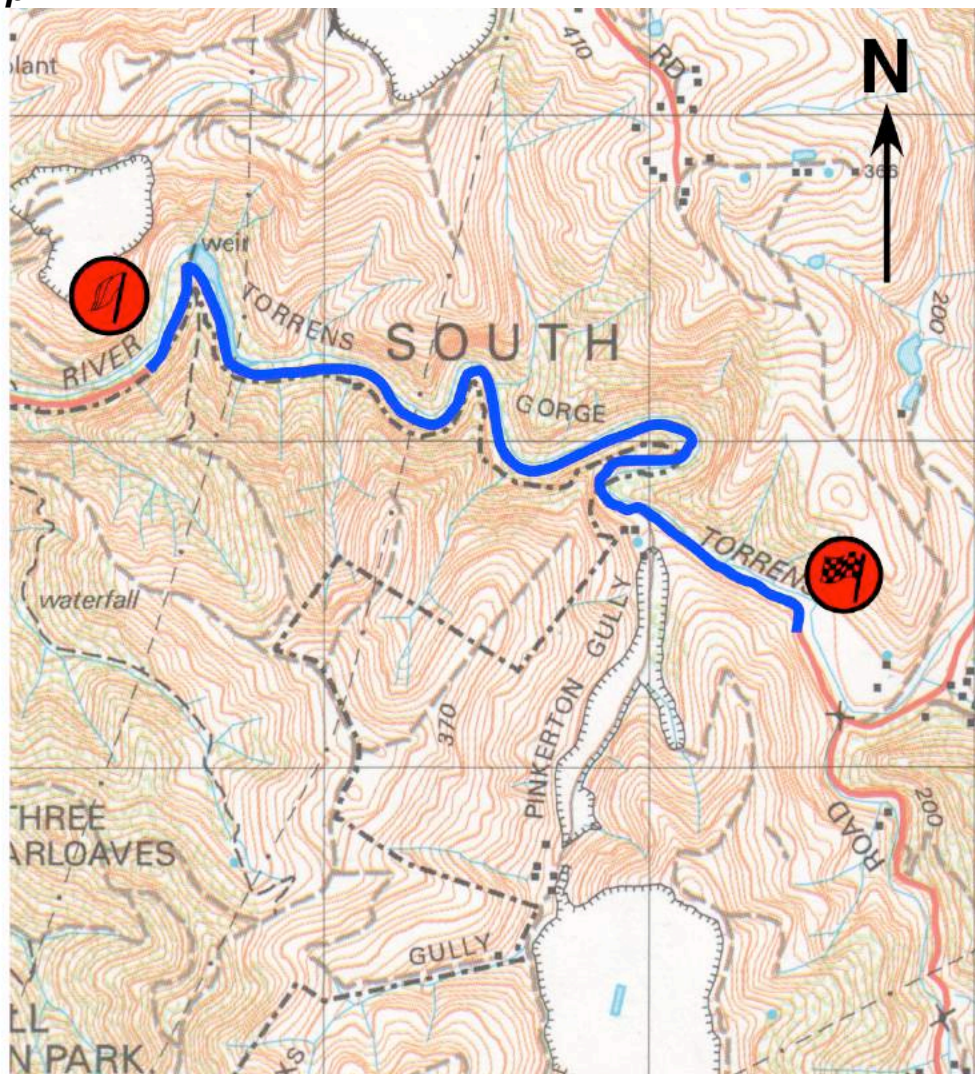
SS2 & SS6 Pinkerton Gully is a very twisty and challenging road at the base of Gorge Road.

There is one RSP at 2.10 km. There are two double cautions. The first is at 2.35 km where the road goes hard right with a dropoff on the outside of the corner. The second is just before the flying finish at 3.47 km where the road goes hard right then immediately hard left.

### GPS Points

Stage Start		<div>34° 51.489' S 138° 43.828' E</div>	
RSP1	from	<div>34° 51.686' S 138° 44.705' E</div>	to <div>34° 51.671' S 138° 44.841' E</div>
Flying Finish		<div>34° 52.024' S 138° 45.082' E</div>	

### Stage Map



Grid squares represent 1 kilometre squares



## SS3 & SS7 – Paracombe 1 & 2

Sunday 6<sup>th</sup> October: Distance 5.10 km  
First Car Due: 10:56 and 12:40

### Description

SS3 & SS7 Paracombe is the next piece of Gorge Road. It has more open sweeping bends as it passes Kangaroo Creek reservoir.

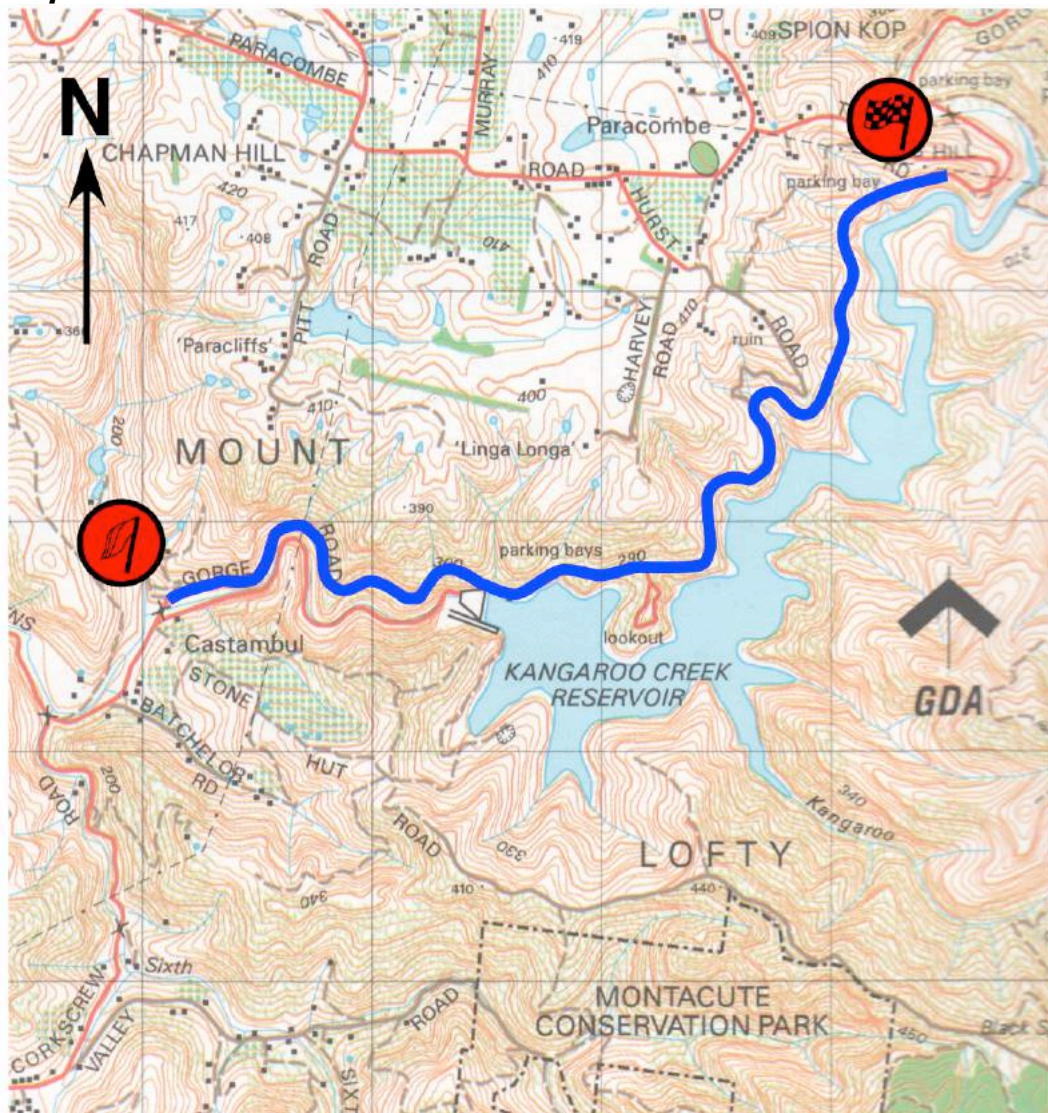
There is one RSP at 2.44 km.

There are two double cautions at 2.95 km and 3.48 km where the road goes right just after crests.

### GPS Points

Stage Start		<div>34° 51.882' S 138° 45.515' E</div>	
RSP1	from	<div>34° 51.840' S 138° 46.854' E</div>	to <div>34° 51.841' S 138° 46.986' E</div>
Flying Finish		<div>34° 50.958' S 138° 47.620' E</div>	

### Stage Map



Grid squares represent 1 kilometre squares



## SS4 & SS8 – Prairie 1 & 2

**Sunday 6<sup>th</sup> October: Distance 2.27 km**  
**First Car Due: 11:09 and 12:53**

### Description

SS4 & SS8 Prairie is a short very tight blast before Cudlee Creek.

There will be a short 10 minute regroup after Prairie 1 before you tackle stages 5 to 8.

After Prairie 2 there will a lunch break of approximately 60 minutes before commencing the stages in the reverse direction.

At entry to both regroups you will be given a provisional start time to leave the regroup.

### GPS Points

Stage Start

34° 50.767' S
138° 47.723' E

Flying Finish

34° 50.383' S
138° 48.560' E

### Stage Map



Grid squares represent 1 kilometre squares



**SS9 – Karrawirra**  
**Sunday 6<sup>th</sup> October: Distance 2.40 km**  
**First Car Due: 14:04**

**Description**

SS9 Karrawirra is SS4 & SS8 Prairie now running in the opposite direction. The road is very tight and twisty.

**GPS Points**

Stage Start

34° 50.411' S
138° 48.540' E

Flying Finish

34° 50.782' S
138° 47.769' E

**Stage Map**



Grid squares represent 1 kilometre squares



## SS10 – Kangaroo Creek

**Sunday 6<sup>th</sup> October: Distance 5.20 km**  
**First Car Due: 14:13**

### Description

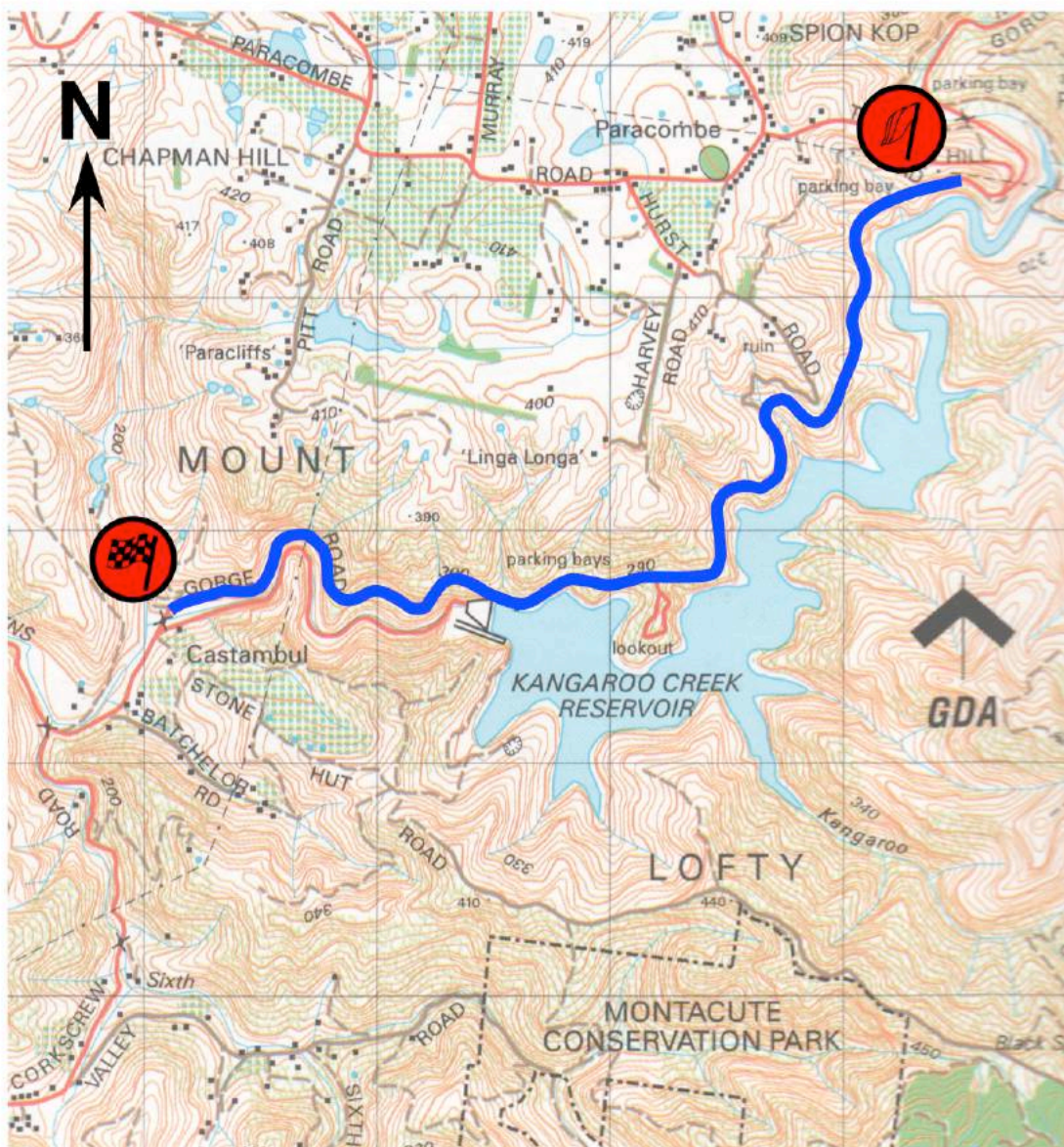
SS10 Karrawirra is SS3 & SS7 Paracombe now running in the opposite direction. The road opens out into sweeping bends passing Kangaroo Creek Reservoir.

There is one RSP at 2.78 km.

### GPS Points

Stage Start		34° 50.964' S 138° 47.814' E	
RSP1	From	34° 51.849' S 138° 46.976' E	to 34° 51.849' S 138° 46.842' E
Flying Finish		34° 51.849' S 138° 45.647' E	

### Stage Map



Grid squares represent 1 kilometre squares



## SS11 – Athelstone

Sunday 6<sup>th</sup> October: Distance 3.82 km  
First Car Due: 14:26

### Description

SS11 Athelstone is SS2 & SS6 Pinkerton Gully now running in the opposite direction. Again the road is very tight and twisty.

There is a double caution at 1.38 km for a hairpin left with a gutter on the left.

There is another double caution at 3.55 for a hairpin left with a sharp kerb on the inside.

### GPS Points

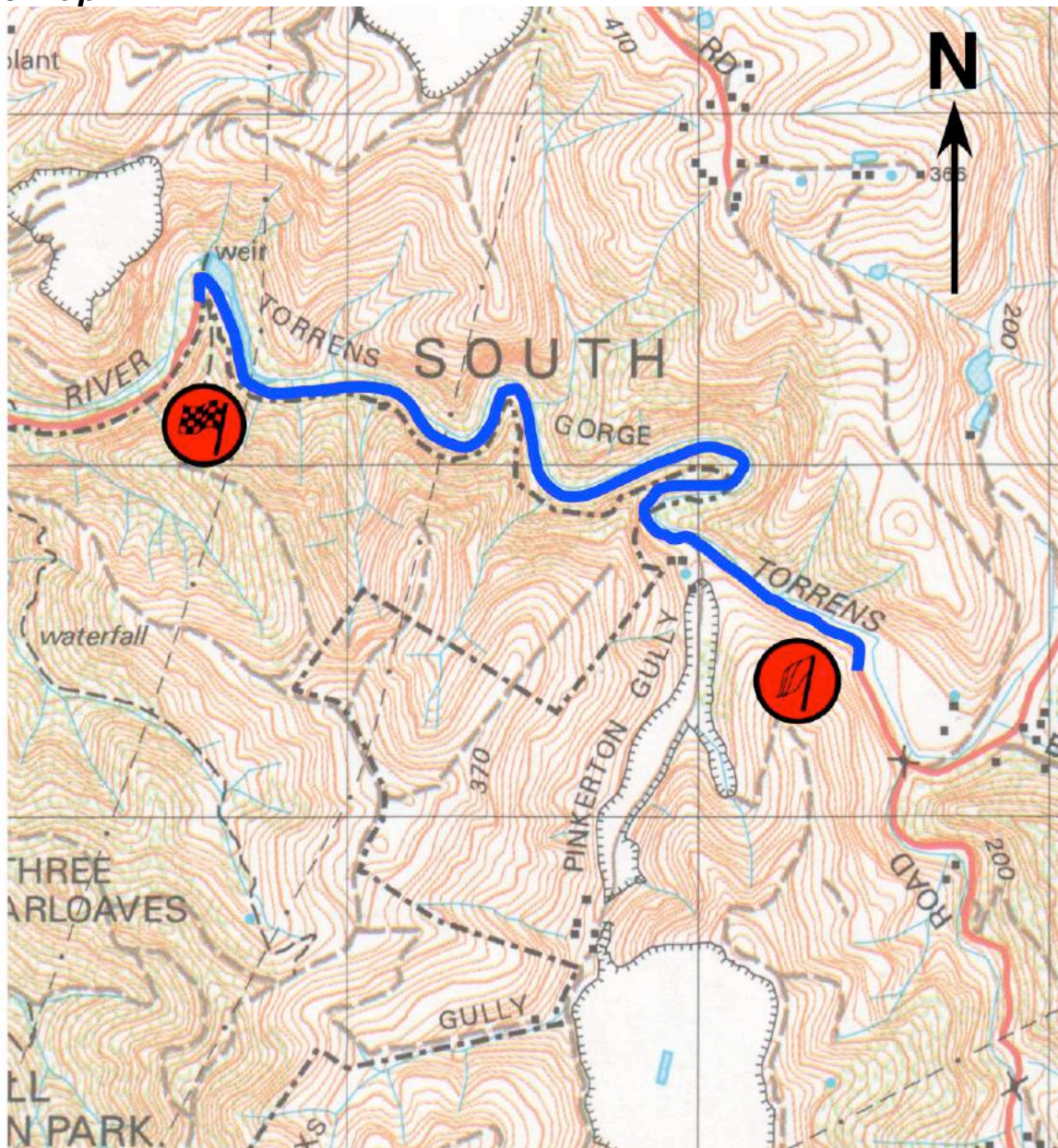
Stage Start

34° 52.151' S
138° 45.150' E

Flying Finish

34° 51.497' S
138° 43.832' E

### Stage Map



Grid squares represent 1 kilometre squares



## SS12 – Anstey Hill

Sunday 6<sup>th</sup> October: Distance 2.66 km  
First Car Due: 14:59

### Description

SS12 Anstey Hill is SS1 & SS4 Vista now running in the opposite direction. The road starts with a steep windy uphill road.

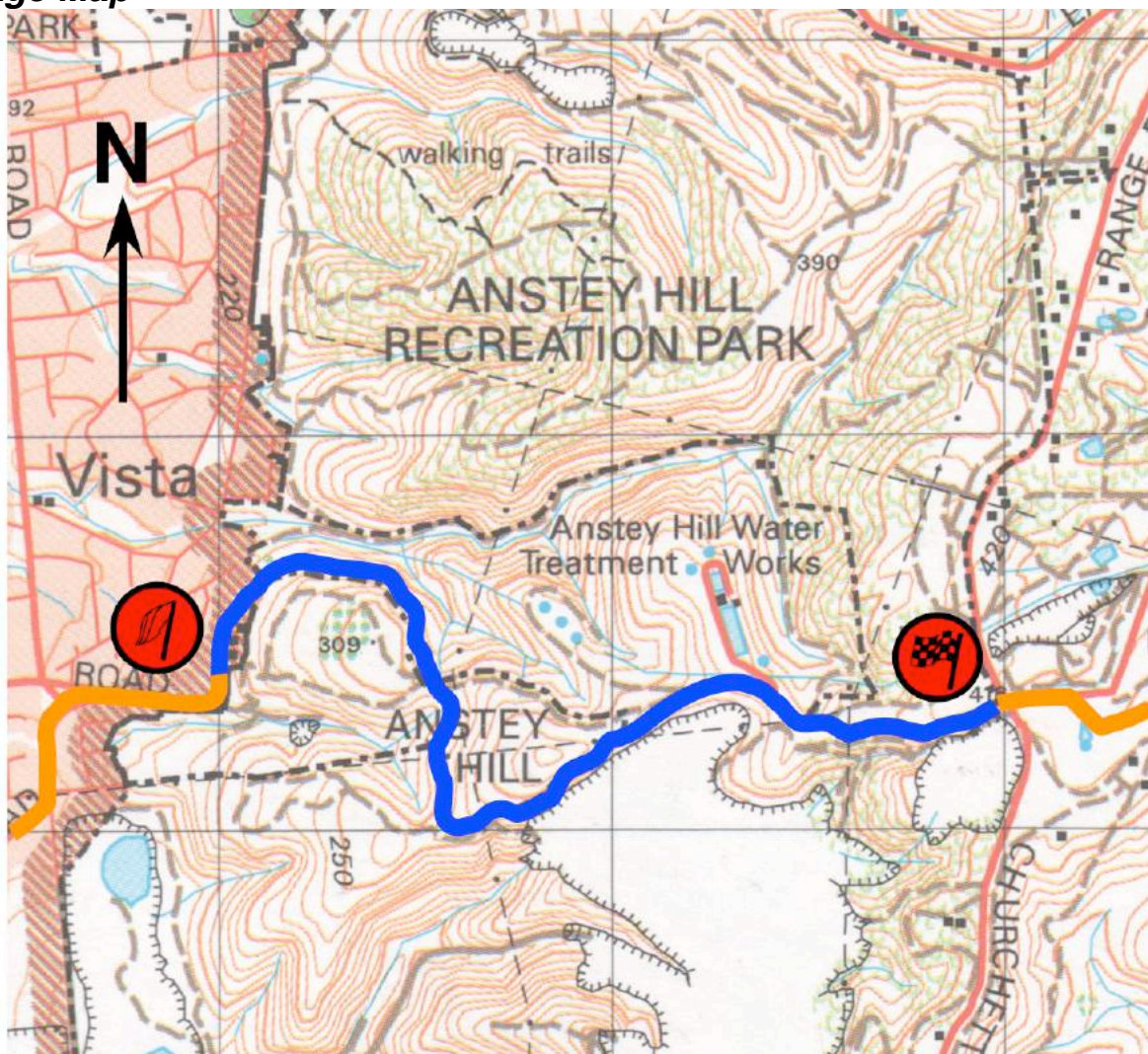
There is one RSP at 1.84 km.

There is a **double caution** at 1.30 km where the road goes hard left. The flying finish is 0.23 km before the junction with Range Road.

### GPS Points

Stage Start		<div>34° 50.404' S 138° 43.506' E</div>	
RSP1	From	<div>34° 50.477' S 138° 44.171' E</div>	to <div>34° 50.419' S 138° 44.279' E</div>
Flying Finish		<div>34° 50.471' S 138° 44.655' E</div>	

### Stage Map



Grid squares represent 1 kilometre squares